

The *Palette*  
SPACIOUS. SCENIC. SOCIAL.

SURAJ  *Be assured*

MORE SPACIOUS,  
MORE SCENIC  
AND MORE  
SOCIAL THAN  
YOU EVER  
IMAGINED.



# INTRODUCING THE PALETTE.

## LUXSPACIOUS 2 & 3 BHK

### RESIDENCES AT DADAR.



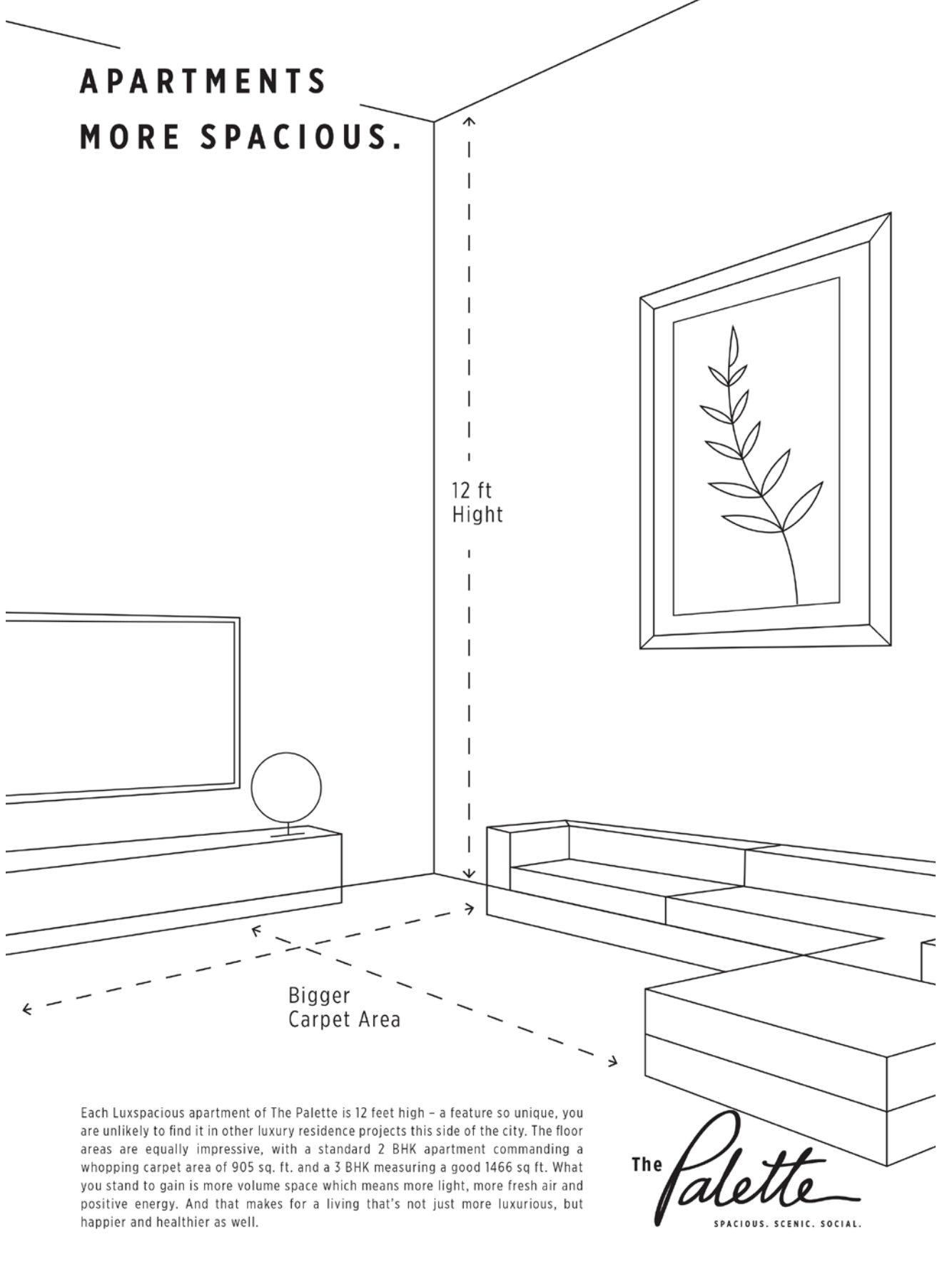
Standing tall in the heart of Mumbai, The Palette is a new benchmark in luxspacious living marked by more space, better views and lifestyle avenues. Tastefully designed by award winning architect, Ar. Sanjay Puri, The Palette promises more space inside every apartment. The sprawling 40 storey tower (with 9 levels of podium parking) boasts of stunning views of the Bandra-Worli Sea Link and the Arabian Sea. Located in the prime neighbourhood of Dadar, The Palette provides easy access to the city's finest commercial hubs (Lower Parel and Worli) as well as important places of worship (Siddhivinayak Temple and Portuguese Church) and unlimited entertainment options (malls, theatres and parks). Add to that the choicest amenities and fittings that are worthy of a luxury residential tower make The Palette an address to be proud of.

The *Palette*  
SPACIOUS. SCENIC. SOCIAL.

THE BENCHMARK  
OF LUXSPACIOUS  
LIVING JUST GOT  
RAISED. BY A  
GOOD TWO FEET.



# APARTMENTS MORE SPACIOUS.



12 ft  
Hight

Bigger  
Carpet Area

Each Luxspacious apartment of The Palette is 12 feet high – a feature so unique, you are unlikely to find it in other luxury residence projects this side of the city. The floor areas are equally impressive, with a standard 2 BHK apartment commanding a whopping carpet area of 905 sq. ft. and a 3 BHK measuring a good 1466 sq ft. What you stand to gain is more volume space which means more light, more fresh air and positive energy. And that makes for a living that's not just more luxurious, but happier and healthier as well.

The *Palette*  
SPACIOUS. SCENIC. SOCIAL.

**A VIEW AS  
BIG AS YOUR  
AMBITION.**



# A LIFE MORE SCENIC.



Bandra-Worli Sea Link View\*



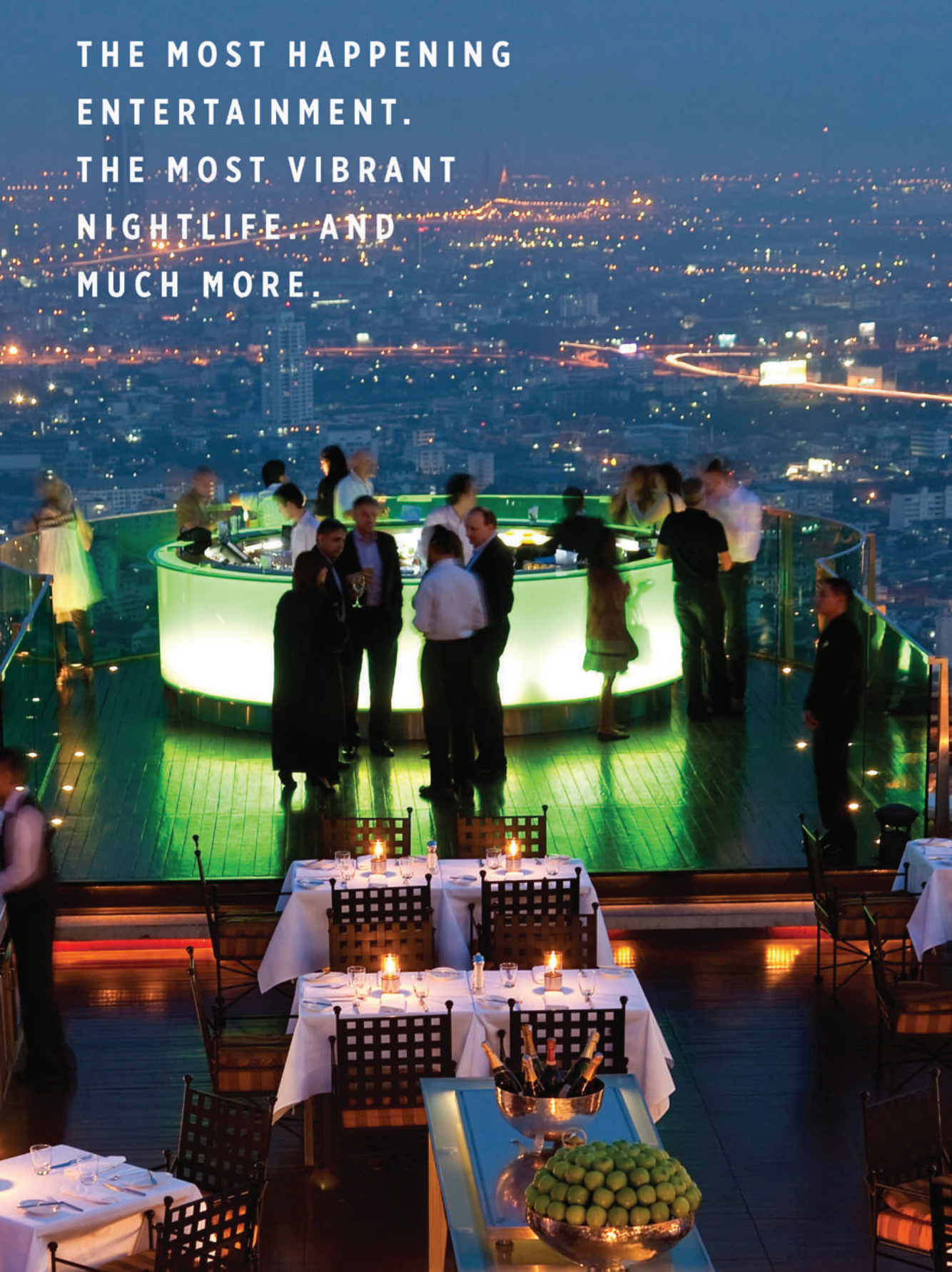
Siddhivinayak Temple View\*

To say that the views offered by The Palette are stunning is quite an understatement. Residents will have a spectacular view of the Arabian Sea as well as the iconic Bandra-Worli Sea link thanks to the sea facing balcony.\* The views at night when the bustling city of Mumbai comes alive promise to be equally breathtaking. Our apartments start at a height of 70 feet, thereby making sure nobody misses out on the stunning views.

\* 3 BHK apartments come fitted with sea facing balconies. Actual view may differ from apartment to apartment.

The *Palette*  
SPACIOUS. SCENIC. SOCIAL.

THE MOST HAPPENING  
ENTERTAINMENT.  
THE MOST VIBRANT  
NIGHTLIFE, AND  
MUCH MORE.





# A LIFESTYLE MORE SOCIAL.



The Palette is right where the action is. The city's most happening 5 star hotels, shopping malls and entertainment options are easily accessible from The Palette. The Palette is well connected to business districts like BKC and Nariman Point and also to world class commercial and business establishments in Lower Parel, Worli and Prabhadevi. It also enjoys close proximity to leading international schools, hospitals and financial institutions. To top it all, even famous places of worship like Siddhivinayak and Portuguese Church are just a stone's throw away.

The *Palette*  
SPACIOUS. SCENIC. SOCIAL.

# WHEN LIVING IS TRULY LUXURIOUS, IT SHOWS.

Exclusivity is said to be the highest form of luxury. The Palette has been specially designed for exclusivity with a focus on the key luxury essentials for a good life. Take the elevators, for instance. There are four elevators in the tower. And just four apartments per floor. As you can see, exclusivity begins the very moment you step out of your door.





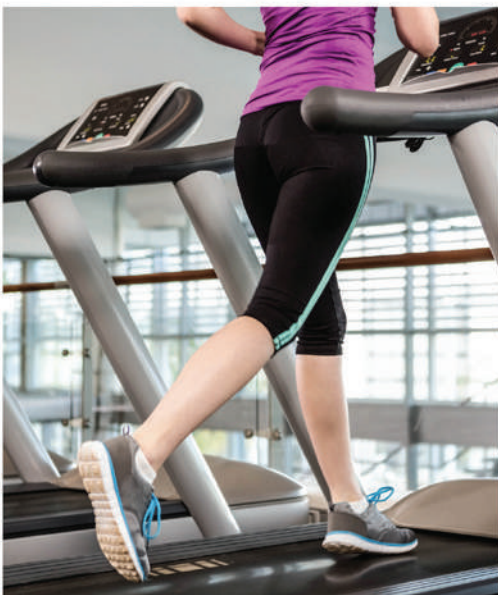
Swimming pool



Landscaped Podium



Well appointed club house



Gymnasium



9 level podium parking

The *Palette*  
SPACIOUS. SCENIC. SOCIAL.

# IT'S TRUE. LUXURY LIES IN THE DETAILS.

Apartments in The Palette have been designed with great attention to the smallest detail. All materials, fixtures and fittings have been hand selected to complement the luxurious urban lifestyle of our residents.

## Internal Amenities :

- Italian marble flooring in living room, passages and master bedroom
- Vitrified tiles for kitchen, children's room, guest bedroom and all bathrooms
- CP fittings of Grohe or equivalent
- Sanitary fittings of Roca / Duravit / Kohler or equivalent
- Premium quality Granite kitchen Platform fitted with SS type Franke sink or equivalent make
- Teak wood frame doors with both sides veneer and melamine finish
- Windows – Premium aluminium windows with anodized / powder coated finish and black granite / marble sills
- Three coat Plastic Emulsion paint over Gypsum finish for internal walls
- Videophone facility interconnecting all flats & 24 hrs. security
- Fire fighting system
- Security cabin

The *Palette*  
SPACIOUS. SCENIC. SOCIAL.

# LOCATION MAP



Shivaji Park

Shiv Sena Bhavan

Inox Nakshatra Mall

Kabutar Khaana

Dadar Railway Station

Portuguese Church

Our Lady Of Salvation High School

ICICI Bank

Kirti College

Shree Siddhivinayak Temple

Ravindra Natya Mandir

Motilal Oswal

Indiabulls Housing Finance

ICICI Prudential Life Insurance

Passport Seva Kendra

Indian Coast Guard Western Headquarters

Worli Fort

Bandra Worli Sea Link

Worli Seafare Road

Pahadpavi New Road

Swatantra Vee Savarkar Marg

Dadar Beach

Chaitya Bhoomi

Swatantra Vee Savarkar Marg

Gokhale Road

S.K. Gore Road

Senapati Bapat Marg

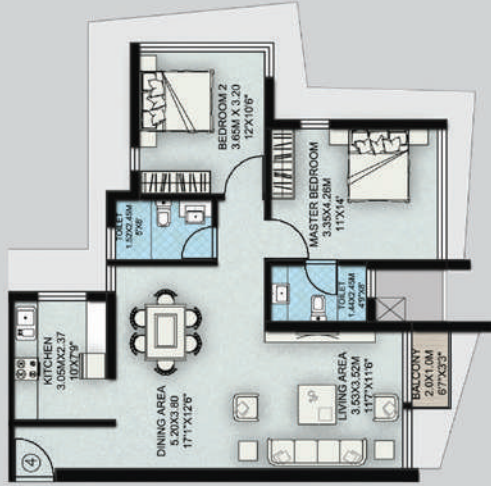
Gokhale Road

Senapati Bapat Marg

Worli Seafare Road

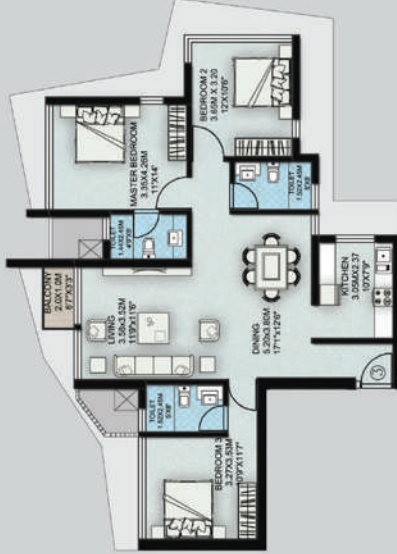


**2 BHK FLAT**  
 (AS PER RERA 885 SQ.FT.)  
 BALCONY AREA: 20.00 SQ.FT.  
 TOTAL AREA: 905 SQ.FT.



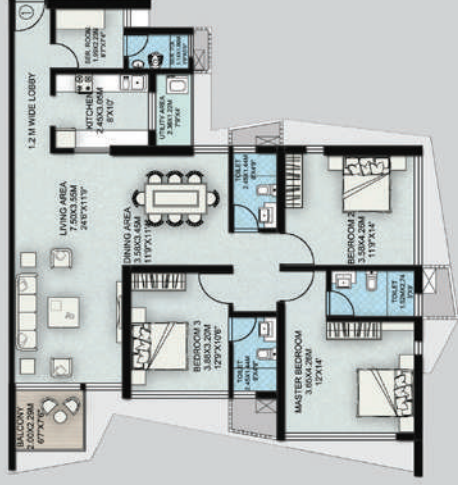
**LUXSPACIOUS 2 BHK (905 Sq. ft.)**

**3 BHK FLAT**  
 (AS PER RERA 1086 SQ.FT.)  
 BALCONY AREA: 20.00 SQ.FT.  
 TOTAL AREA: 1106 SQ.FT.



**LUXSPACIOUS 3 BHK COMPACT**  
 (1106 Sq. ft.)

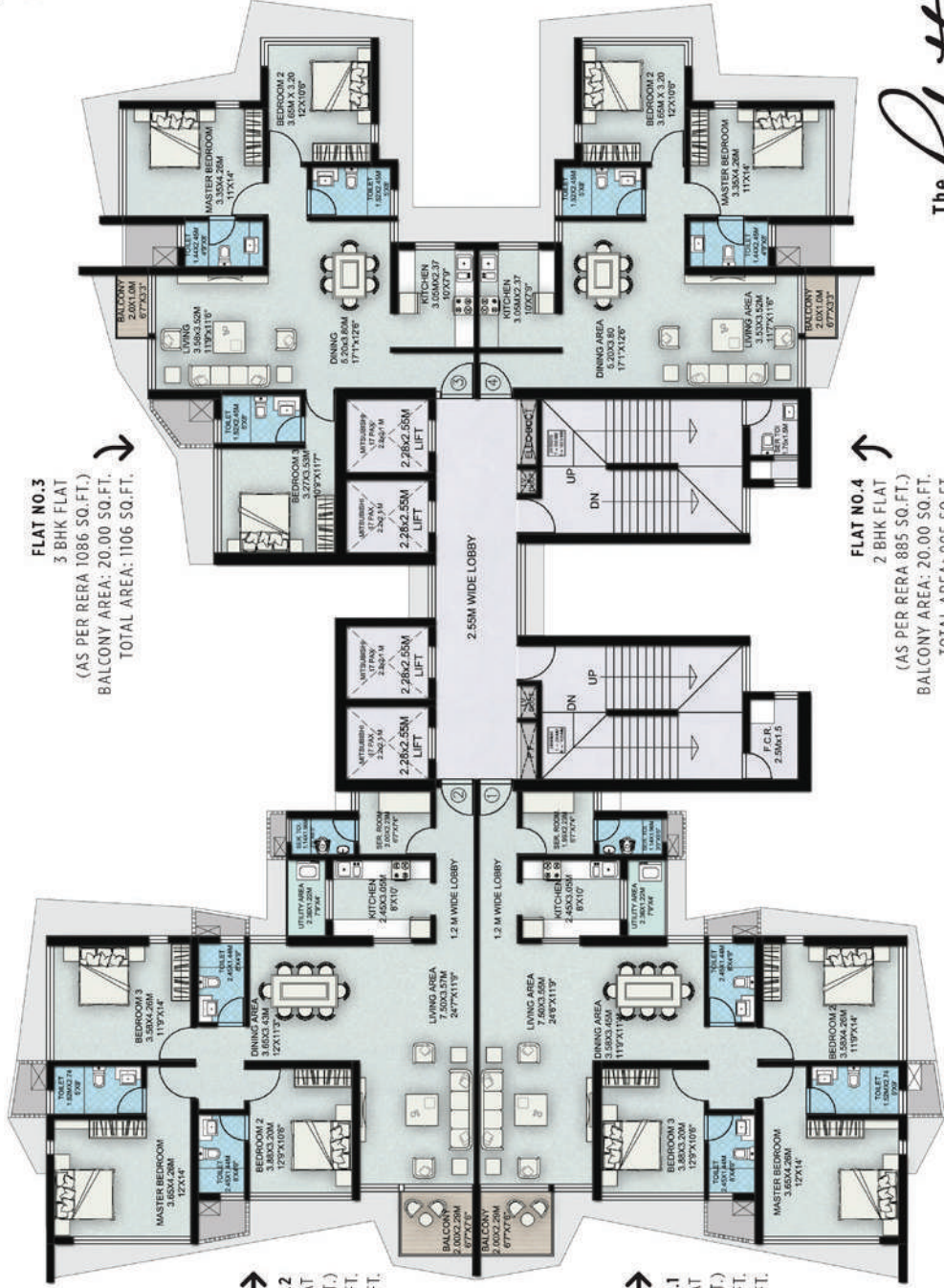
**3 BHK FLAT**  
 (AS PER RERA 1419 SQ.FT.)  
 BALCONY AREA: 47.00 SQ.FT.  
 TOTAL AREA: 1466 SQ.FT.



**LUXSPACIOUS 3 BHK**  
 (1466 Sq. ft.)

The *Palette*  
 SPACIOUS. SCENIC. SOCIAL.

# TYPICAL FLOOR PLAN



**FLAT NO.3**  
3 BHK FLAT  
(AS PER RERA 1086 SQ.FT.)  
BALCONY AREA: 20.00 SQ.FT.  
TOTAL AREA: 1106 SQ.FT.

**FLAT NO.4**  
2 BHK FLAT  
(AS PER RERA 885 SQ.FT.)  
BALCONY AREA: 20.00 SQ.FT.  
TOTAL AREA: 905 SQ.FT.

**FLAT NO.2**  
3 BHK FLAT  
(AS PER RERA 1419 SQ.FT.)  
BALCONY AREA: 47.00 SQ.FT.  
TOTAL AREA: 1466 SQ.FT.

**FLAT NO.1**  
3 BHK FLAT  
(AS PER RERA 1419 SQ.FT.)  
BALCONY AREA: 47.00 SQ.FT.  
TOTAL AREA: 1466 SQ.FT.

The *palette*  
SPACIOUS. SCENIC. SOCIAL.

LUXSPACIOUS 2 BHK (905 Sq.ft.), 3 BHK COMPACT (1106 Sq.ft.) & 3 BHK (1466 Sq.ft.) APARTMENTS

# SURAJ.

## ONE NAME YOU CAN BE SURE OF.



of understanding  
space, design and  
construction



Deeply rooted in  
Dadar-Mahim-  
Prabhadevi locale



delivered across  
residential &  
commercial segments



of space meticulously  
executed in prime  
locales

Suraj has also constructed and sold exclusive residential apartment buildings to ICICI Bank Ltd, Union Bank of India and National Stock Exchange of India Ltd. The Palette at Dadar is its latest offering in the luxury residential portfolio. Besides this, the group has seven other ongoing residential projects between Dadar and Mahim.

SURAJ  *Be assured*

## VISION

To be an iconic real estate construction brand by staying at the forefront of design excellence, quality development and timely delivery.

Our prestigious clientele to whom we've offered real estate solutions include :





## OTHER ONGOING LUXURY RESIDENTIAL PROJECTS :



TRANQUIL BAY, Prabhadevi, Mumbai



MANGARISH, Prabhadevi, Mumbai



LUMIERE, Gokhale Road, Dadar



OCEAN STAR, Dadar, Mumbai



NIRVANA, Parel, Mumbai



ELIZABETH, Dadar, Mumbai



ST.ANTHONY'S, Dadar, Mumbai

**Partners & Associates :**

**Design Architect :** M/s Sanjay Puri Architects | **Liasoning Architect :** Archvision Architects | **Structural Consultant :** Dr. Kelkar Designs Pvt. Ltd. | **MEP Consultant :** Electro-Mech Consultants Pvt. Ltd. | **Construction Partner:** Arabian Construction Company  
**Elevator Consultant :** Learch Bates Pvt. Ltd. | **Solicitors :** M/s Little & Co.



**S U R A J**

**For inquiries, call at +91 7506787148 or email at [sales@surajestate.com](mailto:sales@surajestate.com)**

**Corporate Office :** 15-B, Mahim Mata Building, Marinagar Colony, Mahim W, Mumbai 400016

**[www.surajestate.com/palette](http://www.surajestate.com/palette)**

**MahaRERA NO.: P51900008207**

**Project Financed by**



**Piramal**  
Capital & Housing Finance

The Property has been mortgaged in favour of Piramal Trusteeship Services Pvt. Ltd. (Beneficiary: Piramal Capital and Housing Finance Limited.)  
The buyer is required to obtain a no-objection certificate prior to entering into agreement for sale.

**Disclaimer :** The information in this folder is indicative of the kind of development that is proposed. Subject to the approval of the authorities or in the interest of counting improvement, the developers reserve the rights to change the layouts, plans, specifications or features without prior notice or obligations. The amenities shown inside the brochure are purely indicative. Only content in text presents the actual amenities. Images shown in this ad are for representation purpose only.

Branding & Communication: Co.Lab India